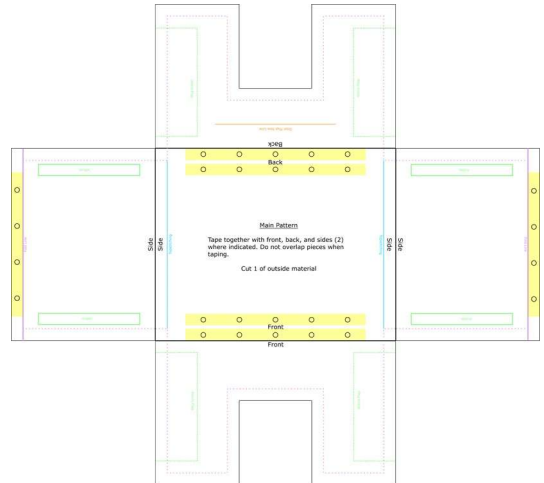


Guinea Pig House Pattern (2-Door Version)

Assemble pattern pieces, which will print on the following pages, in the listed order:

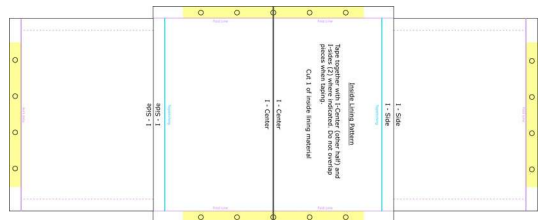
1. MAIN PATTERN: Print, cut out, and tape together (without overlapping) pieces for main (outside material) pattern:

- a. Center
- b. Front
- c. Back
- d. Sides (2)

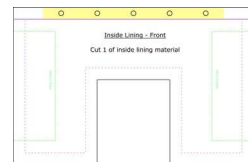


2. INSIDE LINING PATTERN: Print, cut out, and tape together (without overlapping) pieces for inside (lining material) pattern:

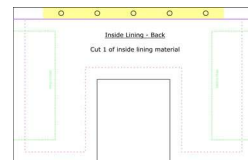
- a. I-Center (2 halves)
- b. I-Sides (2)



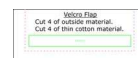
3. INSIDE LINING – FRONT: Print and cut out



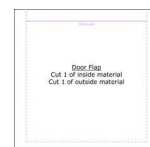
4. INSIDE LINING – BACK: Print and cut out



5. VELCRO FLAP: Print and cut out



6. DOOR FLAP: Print and cut out



Guinea Pig House Directions (2-Door Version)


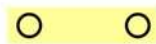





Get material and supplies

1. Material for outside of house – should be a strong/heavy material for durability (use pattern pieces to determine amount needed)
2. Material for inside lining of house – nice, soft material, such as fleece works well (use pattern pieces to determine amount needed)
3. Cotton lining material for backside of flaps (need 4 pieces the size of VELCRO FLAP)
4. Snap tape (28 snaps, spaced 1½ inches apart), cut into 4 sets of 5 snaps each and 2 sets of 4 snaps each
5. Sew-on Velcro strips (17 inches total), cut into four 4¼ inch pieces
6. Plexiglas and special Plexiglas cutting tool (*Note: Plexiglas may also be called Lucite.*)

Cut material

7. Outside material
 - a. Cut 1 of MAIN PATTERN
 - b. Cut 4 of VELCRO FLAP
 - c. Cut 1 of DOOR FLAP
8. Inside/lining material:
 - a. Cut 1 of INSIDE LINING PATTERN
 - b. Cut 1 of INSIDE LINING – FRONT
 - c. Cut 1 of INSIDE LINING – BACK
 - d. Cut 1 of DOOR FLAP
9. Lightweight cotton material:
 - a. Cut 4 of VELCRO FLAP

Key to color coding on pattern pieces:

<u>Key</u>	
	1/2 inch seams
	snap tape
	fold line for finished edges
	topstitching
	placement of flaps
	placement of velcro strips
	door flap sew line

Guinea Pig House Directions (2-Door Version), continued

Sew

* Please note that all seams are 1/2" seams

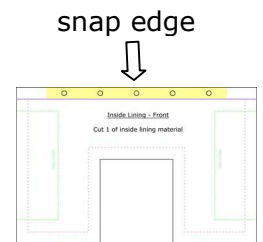
10. Prepare the four Velcro flaps. For each flap:

- Pin outside material to cotton material with right sides together.
- Sew on three sides, as shown on pattern.
- Trim seams and turn out.
- Sew hook-side (rough side) Velcro strip on cotton side, where indicated. Sew through both layers.

11. Prepare door flap:

- Pin outside and inside materials with right sides together.
- Sew on 3 sides, where indicated on pattern, leaving top open
- Trim seams and turn out.
- Fold top sides under on fold line and pin or baste together.

12. Fold snap edges under at fold line (1/2") and sew together. Note: "Snap edges" refer to any snap areas located on the edge of the pattern. There are 8 such areas (2 on MAIN PATTERN, 4 on INSIDE LINING PATTERN, 1 on INSIDE LINING - FRONT, and 1 on INSIDE LINING - BACK).



13. Securely sew four loop-side (soft side) Velcro strips on outside material, where indicated on MAIN PATTERN.

14. Pin door flap to outside material, where indicated, and then sew in place.

15. Pin 4 main house pieces together with right sides together and flaps inserted where indicated. Sew where seams (pink dots) are indicated on patterns (NOT snap edges); then trim seams. Note: To make sure everything is correct so far, you might want to turn it out to check, but before continuing, return it to inside out.

16. Attach snap tape where indicated, making sure that each edge will snap together with its matching edge. Take care not to accidentally sew flaps into seams. Sew; then turn out.

17. Top-stitch on outside material, where indicated (this is necessary to create compartments for the Plexiglas inserts).

18. Cut Plexiglas to fit the five compartments: top, front, back, and 2 sides. I find it helpful to make cardboard samples to fit and then cut the Plexiglas to the size of each piece of cardboard. Otherwise it is too hard to make slight changes to the Plexiglas, once it's cut.

Insert pig and enjoy!

Side

Topstitching

Main Pattern

Tape together with front, back, and sides (2) where indicated. Do not overlap pieces when taping.

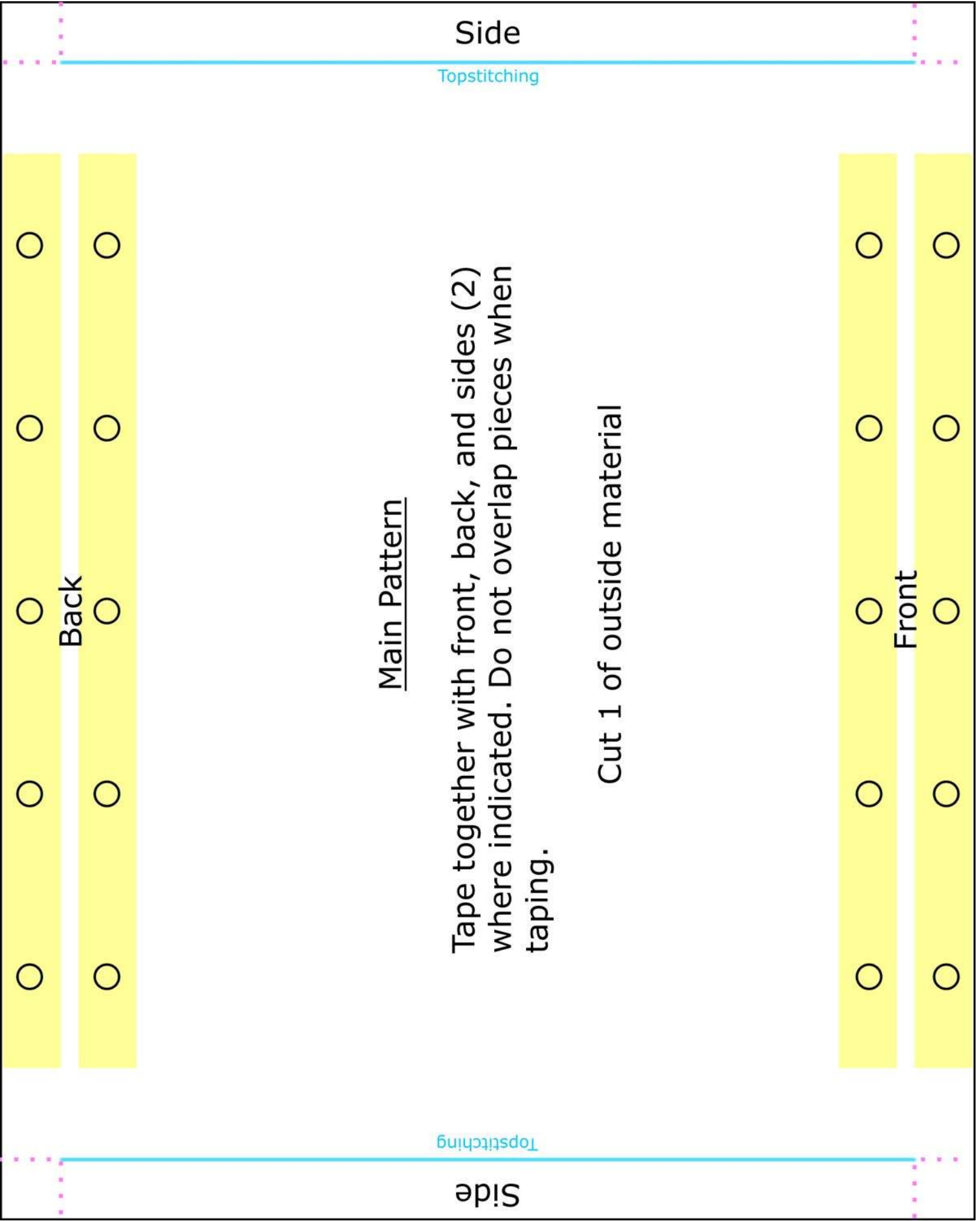
Cut 1 of outside material

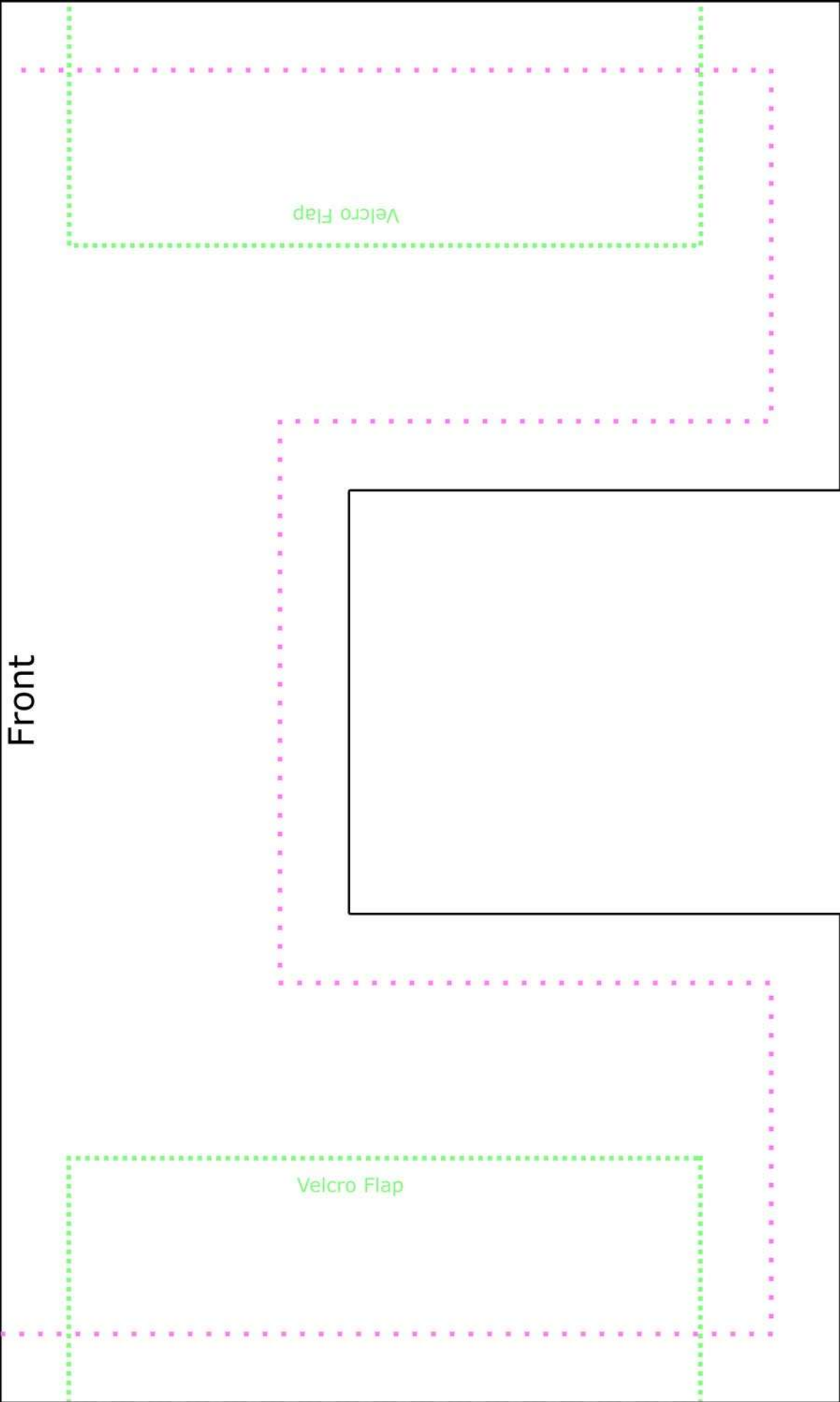
Back

Front

Side

Topstitching





Front

Velcro Flap

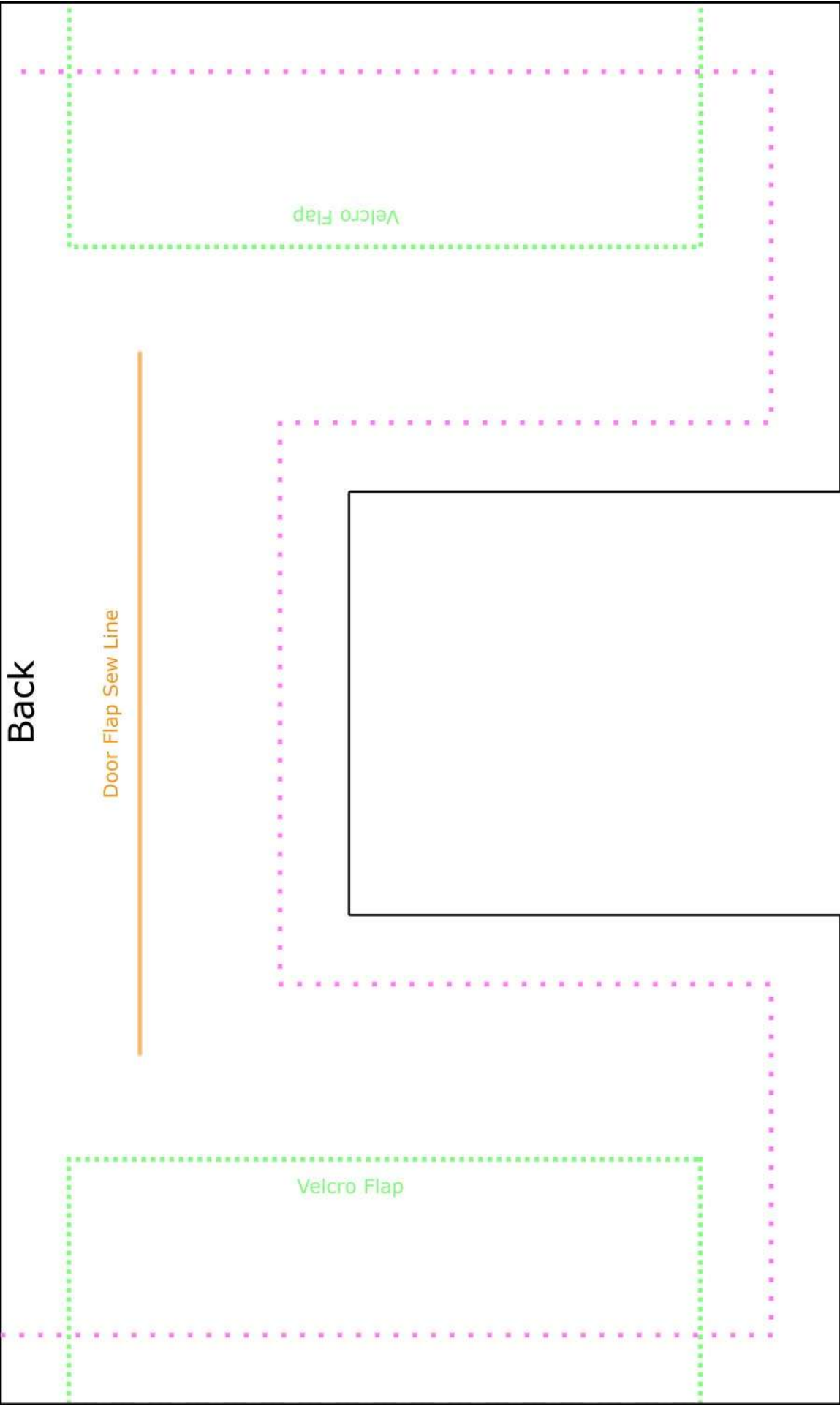
Velcro Flap

Back

Door Flap Sew Line

Velcro Flap

Velcro Flap





Fold Line

Velcro

Velcro

Side



Fold Line

Velcro

Velcro

Side

I - Side

Topstitching

Inside Lining Pattern

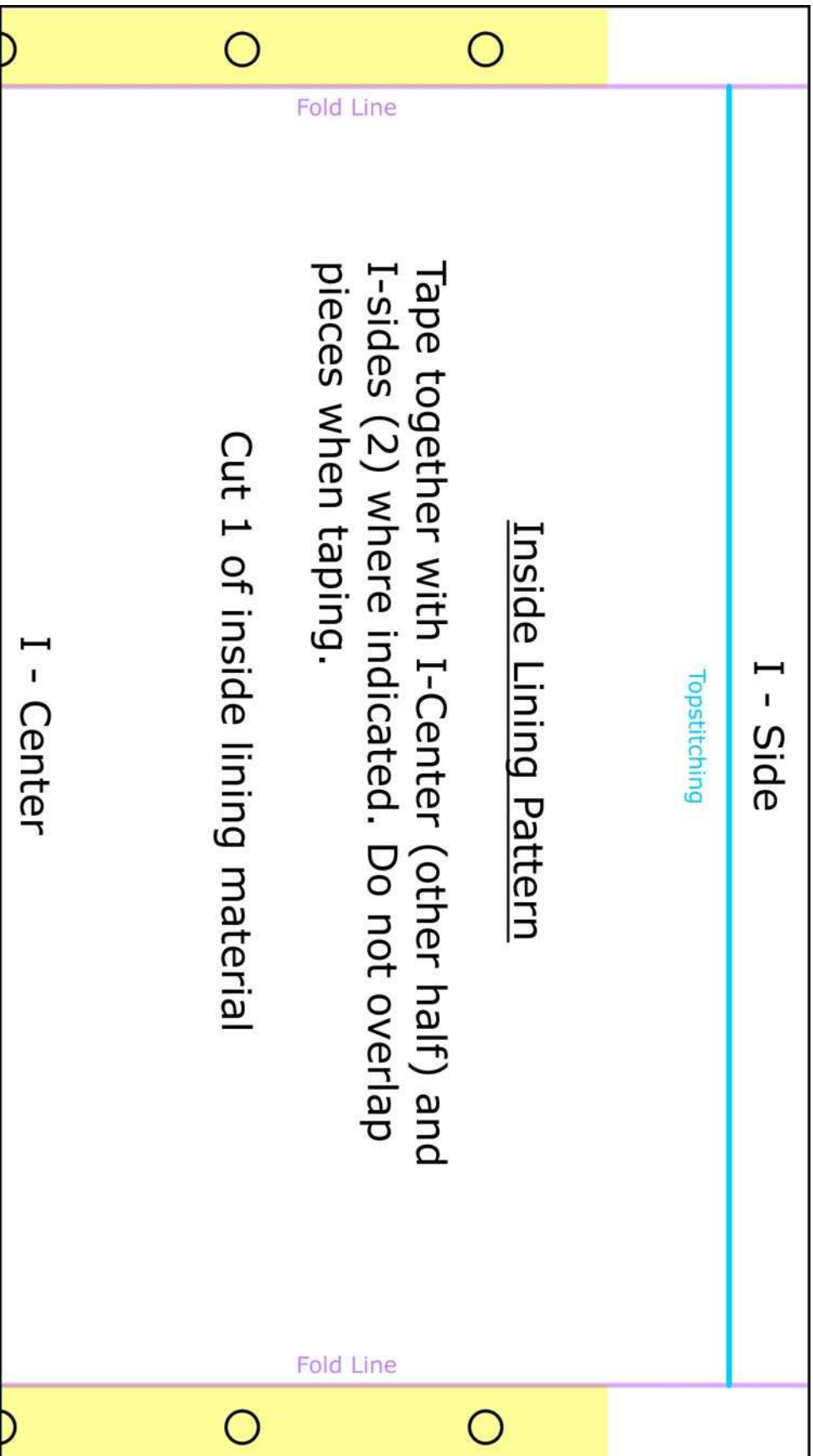
Tape together with I-Center (other half) and I-sides (2) where indicated. Do not overlap pieces when taping.

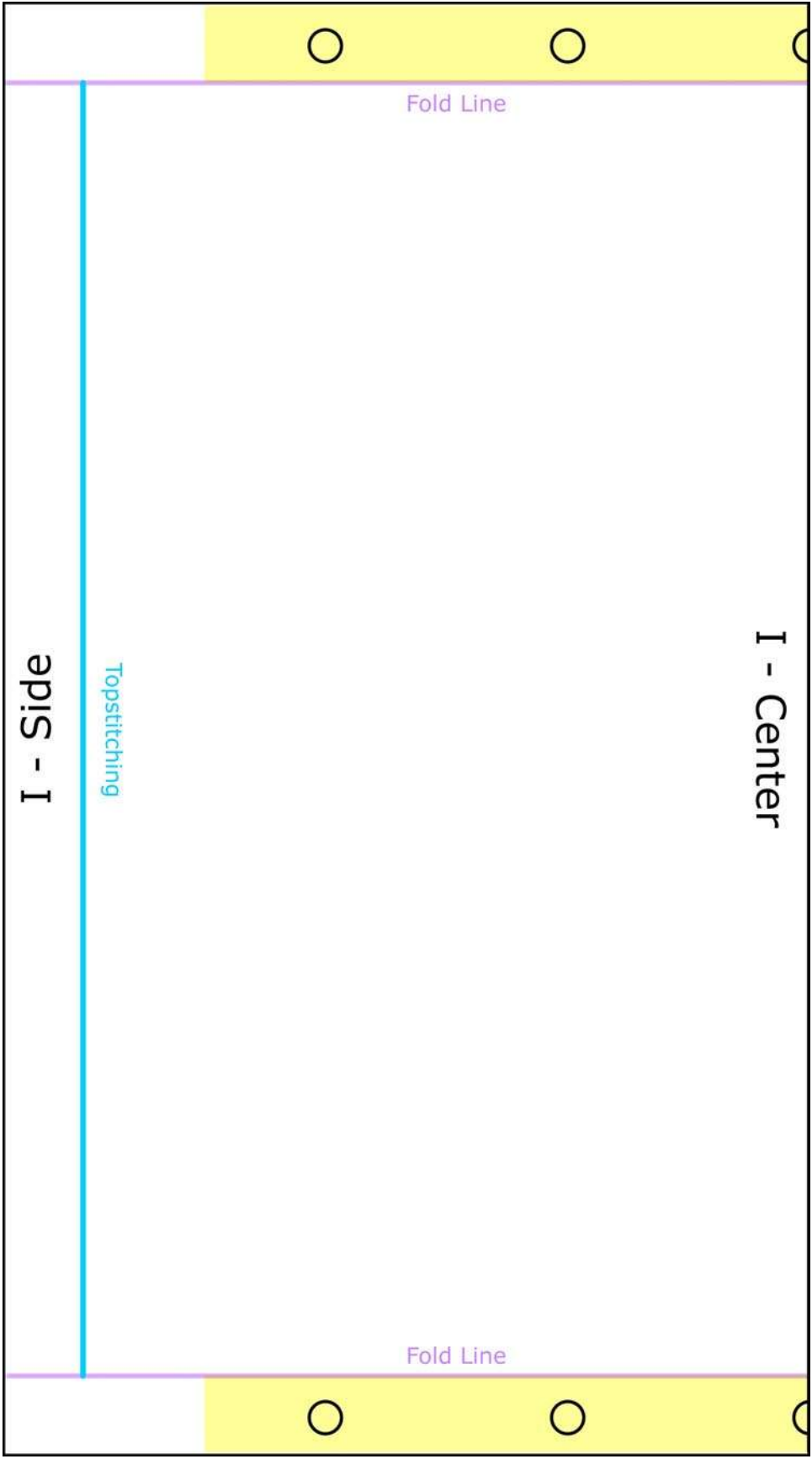
Cut 1 of inside lining material

Fold Line

Fold Line

I - Center







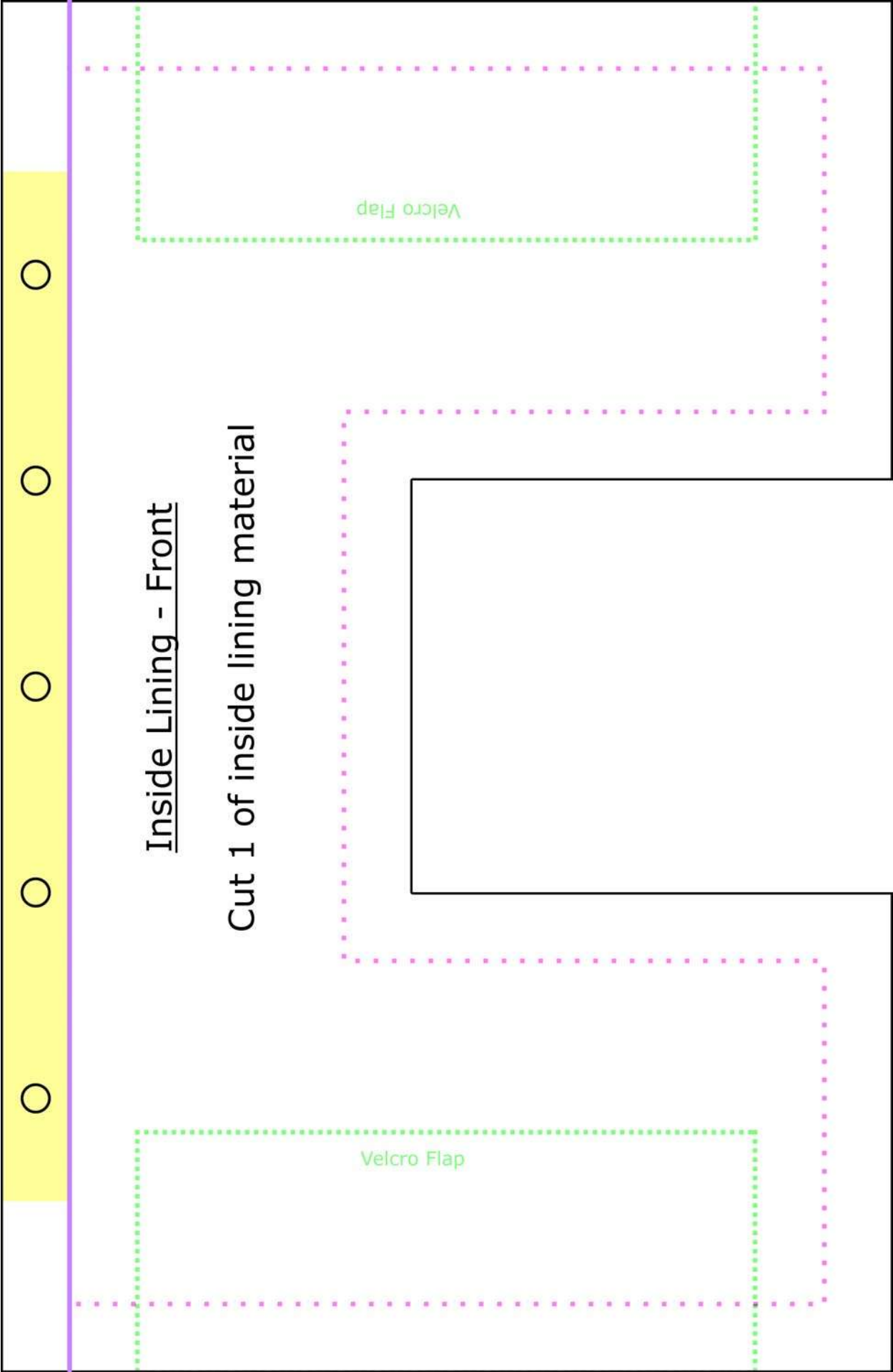
Fold Line

I - Side



Fold Line

I - Side



Inside Lining - Front

Cut 1 of inside lining material

Velcro Flap

Velcro Flap

